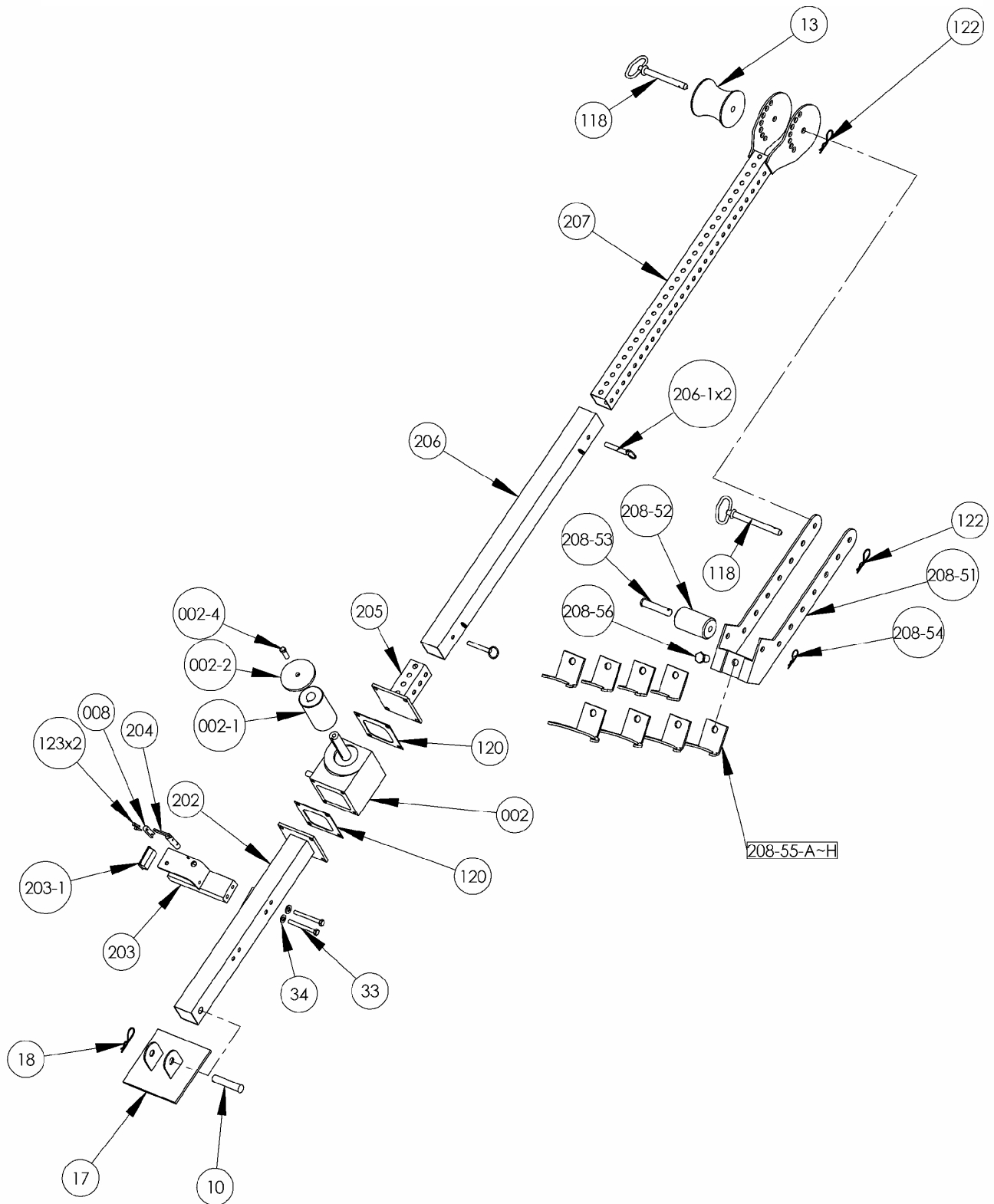


**Parts and Service**



**Parts List**

Key	UPC NO. 75-1129-	Part No.	Description	Qty
208-55 A-H	10550	P3-55A-H	Conduit Adaptors (1" to 4")	8
208-56	10560	P3-56	5/8" Adaptor Bolt	1
208-53	10530	P1-0502	Cotter Pin	1
208-52	10520	P3-52	Front Roller	1
208-54	10540	P1—0501	Clevis Pin, 3/8"x1-3/4"	1
208-51	10510	P3-51	Front Extension	1
122	10122	P3-122	Clevis Pin, 3/8"x1-3/4"	2
118	10118	P3-118	Hitch Pin (4 1/2" x 1/2")	2
13	10130	P3-13	Main Roller	1
207	10207	P3-207	Adjustable Leg	1
206	10206	P3-206	Upper Main Frame	1
205	10205	P3-205	Top Gear box Mount	1
002	10002	P3-002	Gear Box	1
002-1	10021	P3-2-1	Capstan Roller	1
002-2	10022	P3-2-2	Capstan End	1
002-4	10024	P3-2-4	3/8"x1 1/4" Bolt	1
202	10202	P3-202	Bottom Gear Box Mount	1
203	10203	P3-203	Drill Mount	1
203-1	10213	P3-203-1	Drill Mount End Cap	1
204	10204	P3-204	On/Off Switch	1
008	10008	P3-008	Switch Bumper	1
123	10123	P3-123	1032 Hex Screw	2
34	10340	P3-34	5/16" washer	2
33	10330	P3-33	5/16"x3" Bolt	2
18	10180	P3-18	Clevis Pin	1
17	10170	P3-17	Base Plate	1
10	10100	P3-10	Base Plate Pin	1